

**USAGE:** For individuals over the age of 55, take 1 capsule per day or as directed by your qualified healthcare professional. Individuals under the age of 55 should consult a physician before using DHEA.

**WARNING:** Not for use by individuals under the age of 20 years. **DO NOT USE** if pregnant, nursing, or trying to conceive. This product is not a training aid. Use of this product as a training aid, especially in younger individuals, may result in adverse health effects and will not benefit strength training. Consult a physician or licensed qualified healthcare professional before using this product if you have, or have a family history of, a hormonally related cancer (such as breast or prostate cancer), prostate enlargement, heart disease, low "good" cholesterol (HDL), or if you are using any other dietary supplement, prescription drug, or over-the-counter drug. Do not exceed recommended serving. Exceeding recommended serving may cause adverse health effects. Possible side effects include acne, hair loss, facial hair growth in women, aggressiveness, irritability and increased levels of estrogen. Discontinue use and call a physician or licensed qualified healthcare professional immediately if you experience rapid heartbeat, dizziness, blurred vision, or other similar symptoms.\*

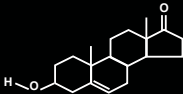
Keep out of the reach of children.

\* These statements have not been evaluated by the Food and Drug Administration. This product is not intended to diagnose, treat, cure or prevent any disease.

**Jarrow**  
FORMULAS®

Dehydroepiandrosterone

**DHEA**  
**10**



**10**  
MILLIGRAMS

**90**  
CAPSULES

**DIETARY**  
**SUPPLEMENT**

## Supplement Facts

Serving Size 1 Capsule

Servings Per Container 90

|                                  | Amount Per Serving | % DV |
|----------------------------------|--------------------|------|
| DHEA<br>(Dehydroepiandrosterone) | 10 mg              | *    |

\* Daily Value not established.

Other Ingredients: Cellulose, magnesium stearate (vegetable source) and silicon dioxide. Capsule consists of gelatin.

No wheat, no gluten, no soybeans, no dairy, no egg, no fish/shellfish, no peanuts/tree nuts.



Distributed Exclusively by:  
**Jarrow FORMULAS®**  
Superior Nutrition and Formulation<sup>SM</sup>  
P.O. Box 35994  
Los Angeles, CA 90035-4317  
[www.Jarrow.com](http://www.Jarrow.com)

04114DH10

PROD # 115055



Lot #. Best Used Before:

© 2014 **Jarrow** FORMULAS®