



GI Support†



Liver/Detox†

SUGGESTED USE: Mix 1 scoop with at least 8-10 ounces of water, juice, or preferred beverage daily or as recommended by your health-care practitioner.

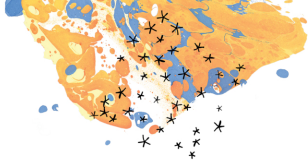
TAMPER EVIDENT: Use only if bottle is sealed. Store tightly sealed in a cool, dry place.

If pregnant, consult your health-care practitioner before using this product.



GLUTEN FREE

#This statement has not been evaluated by the Food and Drug Administration. This product is not intended to diagnose, treat, cure, or prevent any disease.



THORNE®

FiberMend®

Prebiotic

DIETARY SUPPLEMENT



NET WT
11.6 OZ (330 G)

SUPPLEMENT FACTS

Serving Size: One Scoop (11 g)

Servings Per Container: Approx. 30

One Scoop (11 g) Contains:	%DV	One Scoop (11 g) Contains:	%DV
Calories	45	Arabinogalactan (from Larch) (<i>Larix spp.</i>) ††	300 mg **
Total Fat	1 g 1%*	Pectin (from Apple)	150 mg **
Total Carbohydrate	9 g 3%*	Green Tea Phytosome†††	
Dietary Fiber	7 g 25%*	(<i>Camellia sinensis</i> extract (leaf) decaffeinated /	
Soluble Fiber	6 g **	Phospholipid complex from Sunflower)	50 mg **
Partially Hydrolyzed Guar Gum†	8 g **		
Rice Bran	2.5 g **		

*Percent Daily Values are based on a 2,000 calorie diet.

**Daily Value (DV) not established.

†This product uses Sunfiber® AG. Sunfiber AG is a registered trademark of Taiyo International, Inc. †† This product uses Larch Arabinogalactan (ResistAid™). ResistAid is a trademark of Lonza. †††This product uses Indena S.p.A.'s green tea phytosome (Greenselect®). Greenselect is a registered trademark of Indena S.p.A.

manufactured in the USA using US & imported ingredients by:
THORNE RESEARCH, INC., 1-800-228-1966



93749 00282 6
SP635
LSP63510